



Matarua Golf Course 1950 - 2015

This historic Matarua community and very local institution is to close in November 2015. The golf course opened 65 years ago in 1950; formerly it had been part farm and part landing strip. Now, it became a game of thirds with golf being added to the mix. In 1949 a group of locals decided to make their own golf course. With the generous help of the Sterling farm owners it became a reality, taking its name from the localities of Matakahe and Ararua.

Starting out with eight men, the club soon grew to 35, all actively involved in clearing scrub, forming greens and building a clubhouse. Everything was accomplished on a shoestring and even today no money is spent on towny frills (a generator still runs the club house).

The club opened on May 14th 1950 with 52 members. These included many well-known local names, from the Sterlings

A new clubhouse was celebrated in 1975 and only a year later B. Subritzky finally managed a Hole-in-One (a mere 26 years after the course was opened). Having got the hang of this, a whole raft of Hole-in-Ones have followed, perhaps a final one will be celebrated before the club's closure.

Of course, there may be some excuse for the lack of attaining a golfer's dream;




Mavis Smith and brother George Jake Smith, 1950

Social club and Friends' meetings, not to mention an affordable venue for local celebrations. As Derek Hope says, *"Golfers can play golf anywhere, it is the loss to the community of a free of charge facility for fundraising that is a particular sadness"*.

Matarua will host a Closing Day celebration in November to mark its place in local history.

NB: Years ago an alternative site was mooted just above Paparooa, plans were made and discussed.

Perhaps golfing could find a home closer to Paparooa and offer another public attraction? 



Matarua Golfing 1950: Gordon Smith, Tat Smith, Bob Saunders, Brian Smith

(the farm owners) to the Coates, the Balls, the Fenwicks, the Smiths and so on. In fact, Miss Mavis Smith became the first Lady Club Captain.

The subscription fees were set at three pounds for gentlemen and two pounds ten shillings for ladies. (How on earth they arrived at that 'ladies' sum' is a mystery shrouded in time). It is interesting to note that Mr. Mervyn Sterling was not only instrumental in the founding of the golf course but was also a founding member of the Matakahe Kauri Museum; a man who was interested in supporting and developing his community for the benefit of all.

it must be disconcerting to stand by as the Sterling's *Tiger Moth* accomplished touch downs on the fourth Fairway. A shaking hand perhaps, needing the steadying influence of the 19th hole?

A feature of the Matarua Golf Club has been its focus on the players themselves, the well-known two-day tournament raising money for the golf club's wellbeing, and not unnecessary extras. Another feature has been its constant support of community events: fundraisers ranging from events run by Hospice, Ruawai JMB Rugby, the combined Primary Schools' cross country, the Matakahe Kauri Museum's

Spring has sprung ...

The grass is riz
I wonder where
the lambies iz?



Paparoa Press

PUBLISHED MONTHLY BY
Progressive Paparoa Inc. (PPI),
for Paparoa, Pahi, Matakohē,
Whakapirau and Tinopai.

CIRCULATION 1,000

CONTACT US

- press@paparoa.org.nz
- ph 09 431 7209
- PPI, PO Box 107, Paparoa 0543
- www.paparoa.org.nz

ADVERTISING

Rate Card available by email
Booking & Copy deadline:

15th of month

Publication date 1st of month

HANDYMAN



all jobs,
odd jobs

BUILDING & PAINTING

ph Cam 431 6309
021 77 77 92

Lifestyle Village impact on Paparoa

How do you see the impact of the proposed Lifestyle Village?

The Scheme Plan for the proposed Lifestyle Village development includes 15 large residential lots for general sale and 14 smaller units designed for senior living.

As this project is the most significant development for a very long time the impact will be considerable. Fifteen new families could provide a real boost to local schools and sports teams. Will existing organisations have an influx of new members?

The fourteen senior living units could potentially see up to 28 people joining existing activity groups or creating new ones.

With age 70 being 'the new 50', will we see a group of lycra-clad people forming a *Zumba* class at the Hall? Or will there be more employment for home care workers? Will the school be able to call on a new set of grandparents to mentor pupils? Where will these new residents work?

Perhaps some will develop new businesses or work from home. Others might commute. What impact could all this have on local retailers and trades?

During the development phase there will be considerable employment generated. Post development, the residents will require a greater level of local services. Existing shops, cafes and restaurants could expand their businesses. More could be established.

What new businesses would we need? If the new residents are locals and vacate existing larger homes will that free up those homes for new families to move into? How would Paparoa manage these changes?

Realistically the residential lots might take some time to be fully occupied. But with current moves in the Auckland housing market this could be sooner than expected. Real Estate agents are experiencing increased demand.

There are lots of questions to be answered. We have a great environment, a good

Could you help?

The Paparoa Press Gang (those who produce the PP for you each month) are looking for more team members and/or contributors.

It involves working with the team to decide on content and to allocate tasks on a monthly basis.

Please get in touch if you can help - contact us on 431 7209 or at press@paparoa.org.nz



village feel, room to expand but still retain the values we have come to appreciate. The proposed development has the potential to set Paparoa buzzing.

What do you think?

The Steering Group is planning a public meeting to hear your views and provide more detailed information. Details will be in Paparoa Press.

Graham Taylor

Applications for Grants

Applications for Grants from the
Paparoa County Depot Trust
are now being called for:

**To be eligible your organisation
must be a
Registered Charity
run solely by volunteers.**

Completed applications must be lodged with

**The Secretary, Paparoa County Depot Trust
by 31st October 2015 5:00pm**

Application Forms are available from

The Secretary

C/- 2 Latta Road, R.D.1, Maungaturoto 0583

longdrop08-depottrust@yahooextra.co.nz

Community Connexions

Arty Farties Inc

A series of workshops sponsored by Creative NZ funding and Arty Farties Inc. are proving to be very popular.

Following the successful flax weaving in July, an *Aboriginal Dot Painting* workshop was held in August at



Paparoa school, attended by 20 people and tutored by Anne Shanks. Modern methods mixed with old ways, bright paints, some amazing ideas and materials (toothpicks, cotton-buds, pencil ends and sponges) resulted in some fabulous paintings.

The next workshop *Leah's Outdoor Furniture* will be held

12/13 September 10-2pm at the Paparoa sports pavillion. Tutor Leah Dodson will demonstrate re-modelling of recycled fence battens into some crafty furniture ideas. Bring your hammer and something to share with a cuppa.

Planned for 10/11 October, *Diva's Garden Sculpture* with mosaics will be held at Arty Farties community garden shed next to the showgrounds. Call to reserve your place at either of the above. Our gardens have lettuce, brocolli, cabbage, silver beet, and cauliflower growing. If you have any spare fruits and vegetables for donation to our foodbanks please get in touch.

All enquiries to Anne 09 431 6229 or Sue 09 431 6117.



Medical Society AGM Notes

At the recent AGM the previous committee was returned to office with the addition of new member Deb Clapperton.

Re-elected Chair, Graham Taylor reported that the year had been one of consolidation after the previous year's major expenditure on the Paparoa Medical Centre premises. He understood the public appreciated the expanded clinic facilities and easy parking offered. The medical team of Coast to Coast were certainly enjoying having a bigger space to work in.

The committee now comprises:

Graham Taylor, Joy Bonham (Sec), Robyn Skelton (Treas), Libby Jones, Sue Plunkett, Deb Clapperton, Tony Lee, Bill Smellie, George Skelton.

PP

Local recycling facility

A new recycling facility is being added to the well established North Kaipara Transport business. Director Bevan Wilson, along with parents David and Faye Wilson, are opening a full rubbish disposal service at their limeworks in Huarau Station Road.

People will be able to offload their recyclable rubbish for free – such as milk bottles, aluminum and steel cans, recyclable plastic (grades 1,2 &

in our area and also from their wish to provide a facility closer to Paparoa and Maungaturoto than has been previously available.



From left: Faye, David and Bevan Wilson

4), all types of glass (no need to separate out colours), and any paper and cardboard.

At competitive prices, they will take all household rubbish, any other unwanted materials such as whiteware, and even burnable green waste.

This move was prompted by the sight of household rubbish dumped at various roadsides

The site for this venture is at their historic Huarau Station Road property, just a few hundred metres off SH12 between Paparoa and Maungaturoto.

This short unsealed road crosses a railway line so caution is needed with just a few trains each day!

From 1st September, the Wilson family is set up to receive between 10am and 2pm, Monday to Saturday.

Phone Bevan 021 08207 395 with any queries; he will be keen to hear from anyone.

PP

The Glass Guy

Broken
Window
Repairs

Phone Colin
09 431 6595

PAPAROA FARMERS MARKET

LOCAL GOODS DIRECT
FROM THE PRODUCER



Fortnightly SATURDAYS
9am-noon at the Village Green

September 5th 19th
October: every Saturday
ph Graham 431 7209

A letter from America

The following hand written letter has been received from California; addressed to The Office of the Mayor, Paparoa:

Office of the Mayor,
City Hall,
Paparoa

July 10, 2015

Dear Mayor,

I have thought it would be good of me to extend the courtesy of writing a civil message of friendly tidings to you by letter, with warm blessings and admiration for your governing authority over the city of Paparoa.

You may like to know I am a North American, by personal evolution and social agreement, of fifty-nine years of age, with special impartial scholastic devotion to Paparoa, it being a place of perfected metropolitan form and jurisdiction, in Northland, and the North Island.

I would feel honoured if you should wish to reply with complimentary information on Paparoa which may confirm Paparoa to be a city of impeccable character and distinction, in the New Zealand of the twenty-first century.

Thank you,

Very sincerely, (signed) Frank Gray

Address supplied but we are not sure how to reply! PP

Paparoa Store

Proudly Supporting Paparoa

OPEN 7 DAYS

Monday-Saturday 7am-6pm

Sunday 9am-5pm



We stock a great selection of

CONFECTIONERY, ORGANIC, DELI, MEAT,
FRUIT, VEGES, FROZEN GOODS, BEER, WINE
and a wide range of grocery items at excellent prices

DVD's \$1 to \$8 per night

EFTPOS NZ HERALD POST CENTRE

Phone / Fax 431-7320

Cnr. Franklin Road and State Highway 12

REX BROWNE CONTRACTING

- Limestone & Metal Cartage
- Truck & Digger Hire
- Farm Roads
- Earthwork & Dams
- House Sites & driveways
- Wrapped Silage & Hay
- Cultivation
- Fencing & Mulching



Maize Silage
planting & harvesting

09 431 7556
021 720 590

PAINTER

Dave Stephenson

- Interior
- Exterior
- Roofs
- Mould spraying
- Waterblasting

No job too small

09 431 6623
027 490 3522

Hall AGM

The Paparoa War Memorial Hall August AGM returned a full complement of Committee members: Peter Risbridge (Pres), Kate Battensby (VP), Loraine Rowlands (Sec), Robyn Skelton (Treas & bookings), Ken Chambers, Pete Hames, Graham Taylor & Ross Battensby. Peter Risbridge presented his annual report: It was a quiet year with continued community support. Carpark resealing is partially funded by KDC and we will be seeking the balance needed to do the work, plus we plan to bring the front access ramp up to current requirements. Northtec students will complete the interior painting in due course. It is gratifying to see that many Paparoa residents appreciate the Hall and have responded to our appeal for funds.

Thanks to all Committee members, hall users, our brilliant cleaning person Gaylene Risbridge, and ground maintenance volunteers Graham Murray, Stu Robertson and Janice Booth.

Loraine Rowlands

Tango Fling with Swing

ORT is hosting *Tango Fling with Swing* on Saturday afternoon, Sept 19.

Dance partners *Dance Pasión* combine the beauty, seduction, and passion of Argentine Tango together with toe-tapping, swinging jitterbug dancers.



John and Felicity Flower

Tango Fling with Swing is created by New Zealand Tango Champions John and Felicity Flower, who have drawn on each of their extensive backgrounds in the performing arts to form a 15 year Argentine Tango partnership. Bringing the swing to the show are a group of four dancers and live music interludes will be performed by vocalist Chico Zarate and pianist Crystal Choi.

John has 40 years of dance experience that began with ice-skating where he was a Gold Level Ice Dance Champion. He continued on to

specialise in South American dance, winning national titles, teaching and performing in the styles of Salsa, Lambada and Argentine Tango.

Felicity spent her childhood training and competing in the dance forms of Ballet, Tap and Jazz. Her stage background also includes following in her father's footsteps as a Magician in professional magic shows from the age of 8. Felicity's passion for the arts carries over into her award-winning photography and animation work as a Surreal Conceptual Artist. PP

LOOKING FOR A FRESH APPROACH?

It's all about people and the love of the land.

Northland Country

Your local agent

is ready to list ... are you ready to sell?

Let's talk.



Catherine Stewart
Bayleys Northland Country
M: 0800 422 959 B: 0800 80 20 40
E: catherine.stewart@bayleys.co.nz

BAYLEYS
Mackys Real Estate Ltd.
Licensed under REA Act 2008

Dance Pasión
presents

TANGO
Fling with Swing

2pm Saturday 19 September

VENUE Otamatea Repertory Theatre
Bickerstaffe Road, Maungaturoto

TICKETS Door sales only - adult \$20
gold card \$18 school student \$10

Information www.ort.org.nz
ph 09-283 3424 or text 022 354 2670
show duration 2 hours

Rural Women NZ

Rural women living in our district may not know about the organisation called Rural Women NZ (RWNZ), but it has been around for 90 years, although with different names.

I first heard about the benefits of membership of RWNZ when I was undertaking the Agri Womens Development Trust training a couple of years ago. Because I like to know what is happening in all sectors I am involved in, and am always keen to promote women's issues, I found out more.

In 1925 Florence Polson was the instigator of the forerunner organisation of RWNZ - Women's Division of Farmers Union, which later became Federated Farmers. She saw it as an opportunity to improve living conditions on New Zealand farms and to support women with the loneliness and hardships of living on back-blocks farms.

Compared to the hardship of those days we have it easy. However, isolation and loneliness do exist for some and with floods, bad phone lines, power outages, slow and intermittent internet, quite aside from farm commodity

prices, interest rates and the weather, there are still many frustrations.

Rural Women NZ is a charitable, membership-based organisation, which supports people in rural communities with the goal of 'growing dynamic communities'. They promote and advocate (on behalf of rural NZ) health, education, environment and community issues, drawing attention to the impact of rural policies on rural lives.

Current areas they are involved in are rural broadband, safer rural roads, family violence awareness, mental health, women's health and rural crime.

Members can belong to a group in their area or be an independent member like a number of us are around this district. Why don't you check it out for yourself through www.ruralwomen.org.nz or on Facebook.

Libby Jones

THE KAURI MUSEUM

Real New Zealand Heritage

What's on at your Museum

The Wonders of Wool 16 July - 4 September 2015

Follow the wool textile trail at The Kauri Museum.

Discover the impact that wool made on everyday lives

Gilmore Brown 2015 Kaipara Art Awards

7 August-20th September 2015

An exhibition and competition celebrating the creative work of recognised and emerging artists from Kaipara and surrounds.

FREE ENTRY to the museum for residents of the old Otamatea District

5 Church Road, Matakoho, Northland. p: 09 431 7417 w: www.kaurimuseum.com

MUSEUM MUSINGS ...

The Kauri Museum holds the world's largest collection of kauri gum, much of which is beautifully polished and sometimes carved or moulded.

In the mid 19th century, Northland was seized by a 'rush' not unlike that of the goldfields, as people scrambled for the buried golden resin. Kauri gum was the main Auckland export between 1850-1900, peaking at over 10,000 tons (around £600,000 worth) in 1900. * *So why all the fuss?*

Kauri resin is a kind of amber, somewhere between its gummy original state and the full fossilisation found in true amber. It is sometimes known as 'copal' a general term for subfossil tree resins used to make wood varnish.

The ancient Egyptians were well acquainted with the art of varnishing, and in India, China, Japan and Korea, lacquer work was known at a very early date. Traditional European varnishes combined African copal with a drying oil, usually linseed, and a solvent, usually organic turpentine.

The expansion of the railways in Europe and America greatly swelled the demand for varnish for carriages. Experimental shipments of kauri gum sent to London proved its value, and by the 1890s our gum was used in 70% of all oil varnishes manufactured in England.

Kauri gum was favoured because it combined quickly with linseed oil and at lower temperatures than other gums, producing a paler varnish. As good quality gum became scarce after 1910, the focus shifted to linoleum manufacture. By the 1930s, kauri gum was displaced from both varnish and linoleum production by synthetic alternatives.

* data from *Kauri Gum and the Gumdiggers* by Bruce W Hayward. The Bush Press, Auckland 2000

Unichem
Orms Pharmacy Maungaturoto



**For all your health and beauty needs
at competitive city prices and with
friendly country service - call in and
talk with Phil, Karen, Gayle, Shiree
& Traci - if we haven't got it, we will
do our best to get it!**

*Enjoy the benefits of shopping
locally and save petrol -
we are worth the visit!*

*Don't forget -
if you are unable to collect
your prescriptions from the
Pharmacy we can deliver daily to
Paparoa, Matakoho and Tinapoi -
confidentiality assured.*



FlyBuys

144 Hume Street, Maungaturoto
Phone (09) 431 8045 Fax (09) 431 8808
maungaturoto@orms.co.nz
Open Monday to Friday 9am - 5pm

**SHOPPING THAT'S TWICE
AS REWARDING.**

g.a.s. Paparoa

Safety First

- Petrol, Diesel & Oil
- **LOWEST** priced milk
- Great variety of Bait



John & Nicki Eddy
09 431-6302

Mon-Fri 6.30am-6.00pm
Sat 7am-6pm; Sun 7.30am-5.30pm

Weeds, weeds & more weeds

Northland Regional Council's interactive workshop held in July had 20 keen people puzzling over a large number of weeds that are invading our district. Biosecurity Officer Sara Brill presented the group with over 30 various invasive plants which grow around Northland.

They learned how to recognise these and to gain an idea of what can be done by individuals to eradicate them. Many problems are caused by 'garden plants' escaping and damaging natural habitats by smothering or excluding natives; any plant which is a vigorous grower and spreads easily should be considered for removal.

Sara stressed that it is up to residents to be vigilant, to encourage others not to grow, buy or sell these plants and to report to NRC - 0800 002 004 any concerns.

Our local District Council should be contacted if anyone is worried about plants in reserves, but although roadsides are badly infested, they fall beyond their scope.

If you are keen to start a local



community group to work together against some of these weeds, please email press@paparoa.org.nz with your contact details.

Together, with good will, we could rid our roadsides of tree privet as a good start to such a movement. NRC would be supportive of such a group and give adequate training and encouragement.

www.weedbusters.org.nz has much information on identification and ways to eradicate problem plants. PP

The Corner Place Nursery

Large Range Vege & Flower Seedlings

Tomato Plants - several varieties

Capsicum, Chillies,

Lettuces, Beetroot etc

Petunias

Marigolds

Citrus Trees

Quality Roses \$25.50

EFTPOS AVAILABLE

Wholesale orders for seedlings welcome

George & Etha Taylor
on the corner at 13 Jellicoe Road, Ruawai

09 439 2115 or 027 282 2926

ethataylor@xtra.co.nz



QUALITY EXTRA VIRGIN OLIVE OIL

Grown on the Kaipara

Winners of Gold, Silver, Bronze Awards Oliveti & the Easter Show

From Farmers Market fortnightly
Or our Olive Grove located at
46B Merril Rd (off Petley Rd)
Ruth & Mark Mason-Veale

Ph 431 7572 or 021 433 969

Keith the TV Guy Freeview digital TV



16 TV and 9 Radio/Music channels are currently being transmitted.

Satellite dishes, decoders, cable etc., supplied and installed.

09 431 7143
or 021 239 4251

Spring gardening ...

The days are getting longer and it's not so hard to get out of bed for the early morning walk. The tuis are in full flight doing their aerobatics, along with the skylarks singing out loud to claim their territories. Yes, spring is definitely here.

I have planted my tomato seed - *San Mazano* for bottling, *Mortgage Lifter* and *Big Boy* for the big tomatoes; *Sweet 100* for the little ones. This year, since I am short of space I may try a couple of those 14L planter bags with a tomato in each. *Capsicum Double Up* seed has gone in, along with the nice big black aubergine, *Early Prolific*. The cucumbers and other cucurbits will go in later when I am sure it's going to be warm enough to grow them.

The peas are coming up and the spuds are sprouting. I love the planning and preparation of the new season. I just need to make sure I give the plants the love and care they need to reach their potential!

Sounds like we need to be prepared for a long dry summer, so make sure you mulch everything well. It really makes a huge difference, especially if you need to conserve water. The hay gardens I made last year to grow potatoes in have given me areas of garden soil that are not pure clay which is a lovely change and these are laying bare in wait for this season's plants. By keeping them weeded now, hopefully they will be weed-free for planting.

I had hoped the frost had killed many of our pests - but this morning I found two white butterfly caterpillars on the cabbages! Just shows, gardeners always have to be waging war on slugs, snails, possums, green beetles and caterpillars. Enjoy your spring garden.

Stella Clyde

BATTENSBY Bros. CONTRACTING LTD

• Ground Cultivation • Silage and Hay
• Fertiliser Spreading • Fencing



Glenn 021 983 734 Ross 021 983 594
Ph: 09 431 6186 Email: battensbybrothers@xtra.co.nz

Extracts from Kaipara District Council letter

We are a small Council and service a wide area and we appreciate it when we are told of a problem someone has found. Call our Customer Service Centre on 0800 727 059, 09 439 3123 or email council@kaipara.govt.nz. So where are we at?

We know we need to keep rates affordable and have managed an average increase of 3.47%; we need this to keep up with inflation, reduce our debt and address the backlog of maintenance we have with our water supply, stormwater and wastewater pipework.

We will assess the state and condition of pipes and drains below ground and address the

backlog of maintenance over the next 30 years.

Two thirds of our roads are unsealed and likely to remain so, as central government no longer contributes funding to seal new roads in rural areas. 46% of ratepayer rates goes to roading at present. We will apply a *Forestry Roading Targeted Rate* for the next six years to help strengthen

roads most affected by the harvesting of trees; by the end of that time harvesting will be lower and our regular roading budget will catch up.

We continue to maintain our parks and reserves and will be developing a *Street Tree Policy* to clarify what trees can be planted, and where, outside private property boundaries.

We have been able to increase our *Community Development Fund* in response to many requests and can help improve the look and feel of your town centres. A big part of our job is to enforce rules and regulations, charging the user to cover these costs, (i.e. dog, and food premises registrations).

If we work together we can make Kaipara a place where it is easy to live, easy to do business and easy to join in and have a sense of belonging.

Acting Chief Executive
Jill McPherson

Birt & Currie Surveyors Ltd



Local Phone
09 280-9591

**Timely,
friendly &
personal
service**

info@landsurveyors.co.nz
www.landsurveyors.co.nz
PO Box 120 Paparoa 0543

Pets in the Valley ... Riding your horses again

Well the days are getting longer again which makes it much easier to ride before or after work. I recently went to an excellent seminar by a vet from America who is an equine surgeon, acupuncturist and chiropractor. Her view on horse health (which equally applies to humans) is quite holistic in that, for a horse to be well and perform to its best, all pieces of the pie need to be right. Foot care, nutrition, correctly fitting tack and appropriate exercise for their level of fitness were some of the most important.

From a practical point of view that means it is no good trying to just use chiropractic methods to fix a sore back if the horse has a lameness issue or a saddle that doesn't fit correctly. Interestingly, in a study of many horses that were sent to her with a sore back issue, about 65% of them had an underlying lameness that the owners were unaware of. This obviously led the horse to start moving in a different way that, in turn, led to stiff back muscles.

So, the take home message is - don't just drag the pony out of the paddock and go for a 3 hour ride and expect him to be pleased about it! Check the saddle fits well and if you're not sure how, ask someone. I have just read the book *Suffering in Silence*, which is about the importance of a correctly fitting saddle, of keeping the horse's feet well filed over winter, even if you are not riding, so they are not cracked and sore when you do, and to start increasing fitness gradually so muscles and tendons aren't strained.

And most of all enjoy getting out and about again!

Janine

FARMWORK SERVICES

For all types of fencing, stockyards, handyman work, tree felling, tractor work etc.



phone
Mike 09 431 6509
027 203 2694

email
farmwork.services@gmail.com

12 tonne digger now available

KAURI COAST SEAFOODS

Oysters • Mussels • Smoked Fish

See us regularly at the
Paparoa farmers' market

09 431 6684
021 245 8820

540 Pahi Rd
Paparoa



Fresh flounder supplies daily

WINTER SAFETY CHECKS

Winter's here. The condition of your tyres over the winter months is extremely important, so don't delay in getting your tyres checked. Come in and see us today and we'll give you a **FREE** tyre safety check!



Garnetts Tyre Service,
2 Gorge Rd, Maungaturoto.



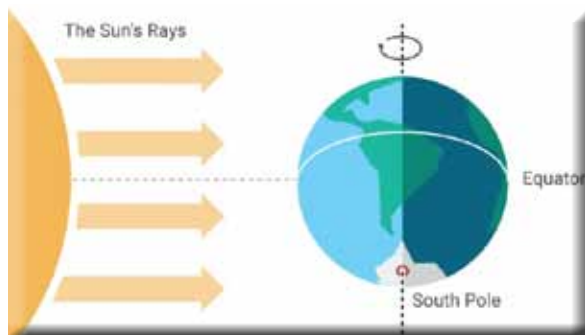
09 431 8255

BRIDGESTONE TYRE CENTRE

HEY, KIDS . . . JUST FOR YOU . . .

Spring into September!

September 23rd is the spring equinox, the point of the year where (for NZ and the Southern Hemisphere) the days and nights are nearly equal in length. This day celebrates the return of the sun as we move towards summer, a day celebrated as a turn towards winter in the northern hemisphere.



Plant new life! In preparation for the A&P Show at the start of February, now is a good time to plant your giant pumpkin seeds for the competition. Also great to plant are runner beans, as there is a nifty idea coming next month for when they are a bit taller. For now, best to keep plants under cover or even inside at night to protect them from the last of the cold days.



Longer hours of sunshine mean more time to play outside!

Perhaps, because we are 'down-under', we are a bit upside-down celebrating Easter in March? The spring equinox is a festival of new life - hence eggs and baby animals - and to celebrate this we've got some great ideas for the whole month!



Spring Clean! Impress your parents by tidying up - anything you no longer play with, or wear, could be donated to people who could really use it.

Get outdoors! Pet and Show Day preparation is in full swing at local schools, so get out and give your pet some love as you care for and train it.



Disco Fever has struck Paparoa. A great time of socialising, dancing and fun was had by a lovely group of children and adults who came from all parts of our surrounding areas. We will be hosting them regularly at the Sports and Recreation pavilion; so watch this space for the next date.

Thanks to everyone for coming along and the helpers to make it so successful.

A big thank you to Garry Frazer for supporting us financially.

Tina Ball 431 6878

You won't go away hungry!

THE CRUISER BAR and GRILL

- Wholesome, affordable meals
- Fully licensed
- Family friendly
- Inside-outside dining
- Private functions

In the
village,
Paparoa
Valley
Road



OPEN WEDNESDAY to SUNDAY, 5pm 'TIL LATE

ph 09 431 6918

Sammy Seal

On Sunday we saw a seal on the Pahi wharf. We have seen him heaps before but only in the water. I wanted him to be my pet and named him Sammy.

He can clap his hands and flap and flip and wave.

He is so clever.

I saw Sammy playing with a fish. The fish was still alive. It chased it and caught it again. It was funny 'cause he was showing off because we were watching.

Stevie-Raye 7yrs



Rhoda Morrison

Your Full Time Local Real Estate Agent

Top Rural Salesperson
last 4 years Region 1

Listing to sell NOW

09-431 6912
0274 800 691

rhodamorrison@xtra.co.nz
www.roperandjones.co.nz



first
national
REAL ESTATE

Roper & Jones Licensed REAA 2008

Dargaville Realty Ltd

A Heavenly Touch

Claudia, the new owner of *L'Art de Beauty*, our local beauty salon, is keen to establish her own specialised services in the soon to be renamed *Heavenly Beauty Therapy*.

She will extend the already offered skin routines and *Swedish Massage* to include *Aromatouch Massage*, the heavenly sounding massage that uses a range of essential oils to soothe and restore the body. The aching bodies of Paparoa will be lining up!

Claudia says that this new adventure follows on from her seven year business of teaching guitar and singing, often using music as therapy. Her partner had just sold property at Tutamoe when they learnt of the salon's

availability through a remark made by the Real Estate agent. In Claudia's words "A light flicked on in their heads" and after brief discussion, "Doors started to fly open."

So many things about the business seemed to fit, offering a good match to Claudia's already established business and massage skills and its proximity to family and friends. (Her partner's family are long-time Matakohē residents). No sooner said than done and Claudia is now working alongside Andria, the long-



time therapist of *L'Art de Beauty*. They celebrated the salon's re-opening with a hugely successful pamper evening. Locals enjoyed mini facials, a chat with others and a glass of bubbly and some yummy nibbles. Look out for the next one; Claudia is already planning a follow up evening.

Claudia does want to emphasise that she is determined to offer a personalised and specialised treatment for her clients. She believes that, "Listening to the client" is what really helps to make a heavenly experience.

PLUMBER

Kaiwaka to Ruawai

- 30 years' experience
- All plumbing services including new housing and maintenance



ANDREW KENNY
ph 027 642 8320

JMB rugby season ends

On Saturday, 15th August Paparoa JMB Rugby Club hosted its last rally day of the 2015 season. With heavy rain throughout the night before and a very wet forecast, a wet muddy day was guaranteed. It was decided that unless weather conditions became stormy the show would go on.

We had a good turn out and all games were played with enthusiasm. It was the wettest rugby day of our season and all grades played through intermittent downpours. The children seemed to enjoy the opportunity to slide around in the mud and puddles, especially on our third field where children were spotted jumping in puddles mid-match. It was great to see friends and whanau of our tamariki brave the weather and come out to cheer from the sidelines.

All of our teams have done well this year, with skills improving weekly and some very competitive games being played. It has been fantastic

watching the children's confidence grow and the teams come together cohesively throughout the season.

With the season's last game at Kaiwaka on 21st August and prize giving on the 26th, a fun club evening out at *My Bounce*, Whangarei will be held in early September.

I take this opportunity to thank all those who have supported us throughout the season.

A special thanks to Andrew Hames, who attended the Small Blacks refs training and has given up his Saturday mornings every rally day to come along and ref for us.

Claire Southern-Vasey

LIFESTYLE AUTOS

new business in town!!
Roger Price



Full
mechanical
services
Warrants
of Fitness

Paparoa Valley Road
next door to G.A.S.
Phone 431 6620



NORTHLANDS BIGGEST
BED OUTLET STORE

- 1/2 PRICE BEDS
- SECONDS-SAMPLES
- SLAT BEDS
- PILLOWS
- TOPPERS
- ADJUSTABLE BEDS
- BEDROOM FURNITURE



STOP BY AT ELLE CEE'S AWARD
WINNING CAFÉ- WHEN YOU COME.

(09) 439 2243
18 Freyberg Road, Ruawai

Jane Short

D.Pod.M MchS
Registered with
Podiatrists Board NZ
and Podiatry NZ

FOOTCARE
PODIATRIST

09 431 8531
020 4022 6598

- Home Visits
- Dargaville Hospital
- Maungaturoto Coast to Coast Medical Centre
- Nursing Homes & Hospitals

"No job too small"

Ross Latto

LICENSED
BUILDERHouse construction, alterations,
renovations, general repairs

Ph 09 431 7442 021 772 766

PO Box 17, Paparoa



Lions and Rotary - acoustic project



Joint project coordinators Graham Donald (Paparoa Lions) and Eileen Parsons (Maungaturoto and Districts Rotary) presenting the cheque to Ashley Cullen (Chairman Centennial Community Hall Committee)

A cheque for \$1550 has been presented to the Maungaturoto Centennial Community Hall committee to go towards the upgrading of acoustics and sound systems. This amount represents the proceeds from the Gala Opening Night for *Alice in Wonderland* as organised by Paparoa Lions Club and Maungaturoto and Districts Rotary Club.

The clubs are most grateful for the support and sponsorship given to this joint project by Otamatea Repertory Theatre, the Country Club, Julie Lewis, Maungaturoto Four Square and Easy Access Ltd.

Art Awards exhibition

The Gilmore Brown Kaipara Art Awards 2015 exhibition is on now at The Kauri Museum and will run until 20 September.

This annual event presents a great opportunity for Kaipara artists to exhibit work and to see what others are doing. Each year the awards attract a higher standard of work as well as a growing number of entries. This year entries comprise the following works/categories: 35 photography & printmaking, 22 three-dimensional, 10 wood, 63 painting & drawing, and 7 adornments. A total of 137 creations, which is 40 up on last year.

Among his comments judge Chris Carey said:

"... it is encouraging to see such dedication and passion." "... an eclectic mix with something for everyone and as a judge you have made it very difficult [for me]."

Entry to the exhibition is free for Otamatea residents, so do get along and check it out, we think you'll be impressed.



"Tough Times", winning photo by Sheila Russell

Carpet Layer

20 years experience

phone Ian Ross

09 431 6939 a/h
027 4996 413

OFFICE RELOCATION

Our Head Office has now moved to
2088 Paparoa Valley Road, PO Box 108 Paparoa
Ph/Fax 09 431 6331 or 09 431 8339

(Previously Powell Contracting Ltd)

For All Your Earthworks – Roading – Drainage – Siteworks & Landscaping Supplies

WE STOCK; Bulk Compost – Topsoil – Sand – Riverstones – Lime Chip – Blue Chip – Bark – Post Peelings – Woodchip – Builders Mix – Cement – Easi-crete – Timber – Posts – Battens – All grades of metal Nails & Staples



Pro-max water tanks - Aqua water tanks - Drain coil - Culverts - Hurricane Gates - Full range of StrainRite fencing supplies



Stockist of Daltons & Watkins:

- Potting Mix
- Compost
- Bagged Shell
- Pebble and Scoria
- Bark & Fertiliser

Open Weekdays 8am to 5pm
Saturday 8am to noon

art ... Design for eating notes from a visit to the city

I dip my spoon into a glass preserving jar complete with wire fastenings and enjoy a spoonful of tomato soup. Since the days of vast white plates with artfully scribbled sauces surrounding tiny morsels of food of nouvelle cuisine, food fashion has undergone major changes. Deep and tall have replaced wide, with food stacked into towers or requiring excavation from deep earthenware pots. Water may be served in old milk bottles containing a small branch of ... rosemary? Chipped enamelware abounds, scrubbed wooden boards and boxes are common serveware and bread is baked and served in terra cotta flower pots - just kidding, that was in the 1980s! Perhaps it's due to come back again?

Actually the preserving jar kept the soup at a perfect temperature. I might try that at home.

The scrubbed concrete interior design phase seems to have gone, too, and trendy city cafes are awash with kitchenalia, gardenalia and all kinds of vintage paraphernalia. How the parents and grandparents wish we had kept those old... copper utensils/jars/packing boxes/wooden wheelbarrows.

The city likes to pretend it is the country, with gardens packed into pallets hanging from the ceiling, a whimsical tableau of push mower in fake grass on the wall, and artful arrangements of implements suggesting the proximity of farming but without the noises, mud or smell.

And at the door of a café in the central city a faux rustic, heavily ironic sign says, "Please take off your dirty gumboots."

Helen Budd

Cameron Philips CABINETMAKER Matakohe



- Kitchens
- Custom Furniture
- Furniture repairs & restoration
- Custom run mouldings
- Stairs & Timber Doors
- Residential & Commercial Joinery

QUALITY WORKMANSHIP

09 431 7579

cgandsphilips@gmail.com

R & D MACDONALD COMPUTERS

Call Ross with your computer problems & repairs
He'll even build a computer to your specifications



Ph 09 431 6221
027 932 8114

email: ross@paradisebreeder.co.nz

Paparoa Primary



Cross country, calves, and Possum Purge

The school cross-country was held Friday 21st August and the kids did well running the muddy cross country course with many spectators to cheer them on.



Over cross country obstacles



Ready-set-go on the cross country race



Under cross country obstacles

Calves at school

After the call for help from the community last month, the school is now raising 4 calves for pet show day. What a great addition to the school!

They were generously donated by Bryce Ball, Terry Donaldson and Kenny Finlayson. Thanks also to Mark & Catherine Pilkington and the Holcroft family for donation of milk powder and to Rosalie Bakker of *sourcenz* for calf meal. Pet and Show Day will be held 14 October.

Possum Purge

Organisation is well underway for the Possum Purge to be held on the weekend of the 17-20 September. The hunt is on from Friday to Sunday (teams can be up to 4 adults and 4 children) with prize giving to be held at 1 pm.

Sunday is to be a full on family fun day with bouncy castle and slide, face painting, gumboot throwing, market and craft stalls, amazing raffles with plenty more. New for 2015 will be 'Pick a Pat'.

Sponsors include 100% Fergus Appliances, Acacia lodge, Ridgeline, Primehort and more. Registration is \$10 per adult, children are free, and entry forms are available at Fergus Appliances, or from the school 431 7379 or email to admin@paparoa.school.nz

Matakohe House



Licensed Café and Bed & Breakfast Accommodation

CAFÉ: Open every day for Lunch, Morning & Afternoon Teas

Matakohe House specialties include:

MUSSELL & KUMARA FRITTERS

NACHOS - spicy beef with sour cream

SOUP - a tasty soup always available

all our food is home cooked

WE CATER FOR ALL CELEBRATIONS - GIVE US A CALL
Matakohe House, 24 Church Road, Matakohe 09 431 7091

PTA Quiz Night

Happy and exciting was the atmosphere at the annual Paparoa School quiz night held in July when 14 keen teams competed! Overall winners were the team *A Hartless Lord* comprising Sam, Vanessa and Alan Hartles, Daniel Alcock, and Tim and Sharlene Lord. The school P.T.A. successfully raised funds while demonstrating a happy school culture; all quizzers had an excellent night out in town.



From left: Daniel Alcock, Alan Hartles, Sharlene & Tim Lord, Vanessa & Sam Hartles

Ross Murphy Plumber

CERTIFYING
PLUMBER

NEW HOUSING
RENOVATIONS
MAINTENANCE

09 431 7510
021 424 252



REMEMBER!



▼
▼
▼
Your
pets
need a
holiday
too

New defibrillator for Paparoa

A new Automated External Defibrillator has been installed at Paparoa's G.A.S. service station. This complements one held at the local Fire Force. G.A.S. proprietors, John and Nicki Eddy are very pleased to act as host for this specialised potential life saving equipment.

A small ceremony was held recently to install the equipment. This was attended by Paparoa Lions President Brian Walker and Music Makers reps, James and Sharon Duffy.

Local Kaumatua Rev Bonny Sheldford also attended with his son Albert. Rev Bonny officiated at the gathering and gave a Whakanoa (blessing).

Lions Club member Graham Donald coordinated this community project. He advised that funds for the purchase of the defibrillator came from Otamatea Repertory Theatre's charity performance of *The Wizard of Oz*, from the Lions firewood project, a donation from the Matakohē Music Makers & Eccentric Ukekele Group's charity performance, and a grant of \$1000 from



the Lloyd Morgan Lions Club Charity Trust. A generous discount on the purchase price was also given by St John of Maungaturoto.

A special training event is

planned so that people of our local community can become familiar with the operation of the equipment in an emergency.

This is set down for Sunday 13th September and will be held at the Sports Pavilion at

the Paparoa Showground at 1.30pm.

Everyone is welcome to attend.

Graham Donald
Paparoa Lions

Letters from the Old Post Office

Revelations

The man-in-the-shed's Shed is currently a veritable Slough-of-Despond. A feeling of despair seeps out and taints the dusty air.

Grown men have taken to standing around in small, silent groups. Their saline tears apparently diluting the Steinlager to such an extent that three beers are necessary, rather than the usual two. Yea, doom has come upon them and there has been much wailing and gnashing of teeth. (Possibly there has even been a full set amongst them at times).



Ironically, only last month, Golf Day was also celebrated as planting of the Rose Day. This will be no more, the end of Matarua Golf Club is nigh. An institution of 65 years will pass into the darkness and go unremembered except at Granddaddy's knee. Stories will be told to disbelieving infants, tales of sheep grazing the fairways, nimbly skipping away from bouncing golf balls and returning to their contented grazing. Quads carrying liquid refreshments, dog caddies and golf club throwing paddies. Venerable farmers chewing the fat (for hours) from the golf club deck as they gazed across the rural landscape. No more, no more.

As for Rose Day, tactics will have to change. The dog and I are thinking.

Deb C



Crompton Engineering Ltd

Phone/fax 09 439 2393
31 Jellicoe Road, Ruawai



Hay Racks
- covered
or uncovered

Palm Kernel
Trailers



website: cromptonengineering.co.nz
email: crompton.eng@xtra.co.nz

Paparoa Motor Camp

CABINS | TENTS | CARAVANS | MOTORHOMES

17 Pahi Rd, RD1, Paparoa, Northland. Ph: 09 431 6515 Email: paparoamotorcamp@xtra.co.nz



Set in a quiet rural area, within easy walking distance to picturesque village with shopping facilities, a general store & post office, service station, restaurant, friendly country pub, takeaways, café, gallery, bush walks. Only 6kms to the Matakohē Museum.

www.paparoamotorcamp.co.nz



Mediterranean Biblical Travels

Recently, Delwyn and I had the experience of a trip into the pages of the Bible. A tour of Turkey saw us calling in at ports on the Mediterranean where the Apostle Paul had visited and established communities of Christian believers.

In places like Ephesus, an ancient city estimated to have a population of 250,000, we walked on the huge stone paving slabs of the streets.



We visited the theatre where the riot broke out because of Paul's message that detracted from the goddess Artemis. The theatre seated 25,000 people. We saw ruins of arenas where gladiators fought to the death, and where Christians who would not deny their faith were fed to the lions.

The boldness of Paul to stand up for his beliefs in these conditions was a challenge to me, not just with my Christian faith, but with anything I believe in. Would I stand firm if the consequences of doing so were as perilous as they were in those days?

Paul's ability to endure was evident when we saw the distances he travelled over steep, rocky and arid terrain, his sole purpose to encourage believers who had formed small groups in faraway places. The ruins and remains of houses carved and dug out in rock, with ancient towns completely underground at Cappadocia, showed the

amazing adaptability of man to his conditions.

A balloon flight over Cappadocia was awe inspiring as we saw an overview of an entire town built into the rocks that were formed (with a lot of chiseling with primitive tools) the homes of many families thousands of years ago, and indeed still to the present day. A visit to one of these homes showed a very cosy, dry and



comfortable abode housing a family of four. The floor was a little uneven and the ceiling a bit hard on the head. All solid rock! (No, not my head.)

We had the privilege of having a worship service in a cave church thousands of years old. Meaningful to us from a biblical perspective was visiting the remains of the



seven churches of the Book of Revelation Chapters 2 & 3. All these churches have visible remains of building but the believers have disappeared. As stated in the Bible, if you do not overcome, God will remove his presence. Thought provoking for us even today.

Another part of our journey saw us at Gallipoli – two weeks after the 100-year memorial. It was a very moving experience, when you know the story and you are actually seeing the almost impassable terrain and considering the conditions soldiers fought in.

The memorial stones shout out loud the loss of young men's lives.



Anzac Cove

We are truly blessed to live in a land without constant war.

Ken Chambers

Lance Keay Contracting Ltd

- Effluent Pond Cleaning
- Single Pass Tillage & Seeding
- Cultivation
- Fertiliser Spreading
- Hay & Silage Mowing
- 6 Ton Trailer

Taipuha RD1, Paparoa, 0571
09 431 6308 021 383 908
lance.k@extra.co.nz



What's Hot

The new Kowhai trees in full bloom on the Village Green – what a sight!

What's Not



Nothing negative reported this month – whoopee!

KMU SURVEYS LTD

MAUNGATUROTO

Ken Urquhart

Licensed
Cadastral
Surveyor



09 431 8705
021 161 2344

kenurquhart@extra.co.nz

HOMEKILLS

WAYNE & ANNETTE

09 439 2020

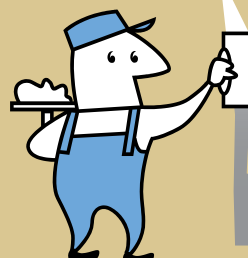


Dry Aged Beef Specialists
Traditional Manuka wood smoked Bacon & Ham

NEW LOCATION
TOKA TOKA

TINOPAI PLASTERERS

WE GUARANTEE THE HIGHEST QUALITY FINISH



35 Years experience in...

- GIB Stopping
- Fibrous Plastering

for FREE quote, call us now!
Trevor 021 0300 073



Tribute to Sean Cooke 1932 - 2015

Many will remember Sean & Freda Cooke who arrived in Paparoa in 1983, having bought the Paparoa Store in partnership with their daughter & son-in-law Maura & David Edwards. By the time Sean and his wife Freda 'retired' to South Auckland around 2004 to live near other family, he often used to say that "Paparoa had become the centre of his universe".

Sean loved living here, and with two of his adult children and seven grand-children living here at the time, he was fully involved in the community. He belonged to various groups such as golf, bowls, Hall committee, Business Association, Anglican Church, Masonic Lodge, RSA, and was even patron of the Rock'n'Roll club. A very sociable gentleman, Sean will be fondly missed by his family, friends, and indeed all those who remember him. Funeral to be Paparoa hall 5 Sept 3.30pm PP

SHEPPARD ELECTRICAL LTD

ELECTRICAL INSTALLATION
AND MAINTENANCE

Bill Sheppard
Electrician



021 975 618

OR
a/h 09 431 7196

OUT & ABOUT

Our condolences to family and friends of Bev Williamson of Pahi who passed away recently. **Condolences also** to family and friends of Sean Cooke who died as a result of a car crash in late August, **and to** family and friends of Andy Martin who passed away on 25 August.

Lost and Found A wrist watch found in the Paparoa Hall, contact Robyn at the Drapery.

Our congratulations go to

Maggie Cui on her recent significant birthday.

The Gypsy Fair will be at Paparoa Showgrounds on 12-13 Sept, opening 9am daily. Come and see what's been created over the winter break. Lots of new handcrafts for all ages. Free entry to this annual event.

Mullet Muster

A great time was had by all at the inaugural Mullet Muster organised by Pahi Boating & Fishing Club on 21-22 August. Kurt Hydman won with a whopper mullet of 1.76kg that measured 12 inches around its big belly! Plenty of mullet in prime condition were caught; then smoked. We gave some to Maungaturoto Rest Home. I'm sure they'll enjoy the omega 3s.

A good group of people came from all over the place and I'm sure there'll be more next year.

Most entertaining was the fastest mullet raced by some speedy humans. Neville Westlake's stellar effort won the adults' race, Ben Donald used his amazing speed and

Paparoa Bush

The Lions Walkway bush has increased pest control with the recent installation of DOC-provided possum traps.

These powerful traps are a further reason for people, not to leave the designated track. The traps are situated out of view from the track for safety reasons, so please keep clear of them.

Recently a weasel was caught in a mustelid trap. With spring around the corner these predators are out looking for victims.

Both Jim Rowlands and Stu Robertson maintain serious pest control in the area to help protect vulnerable birdlife and vegetation. If walkers see anything of concern please contact either Jim or Stu.

Thank you.



Kurt Hydman

M.K. Weber Sawmiller

CONTACT Marek by phone or drop into the mill
94 Tinopai Road, 09 431 7170

WE SELL:

- Pointed Electric Fence Battens
- 1st & 2nd Grade Fence Battens
- Retaining Wall Timber
- Weather Boarding
- Rough Sawn, Gauged & Dressed Timber
- Private Milling Undertaken



Timber cut to ANY size to suit your order

5 Questions for ... Doreen Skelton

How long have you been in Paparoa? I came to live here 56 years ago, in 1959.

Where did you come from and what were you doing before? Born in Whakatane, I worked as a shorthand typist for the Public Trust for many years.

Why did you choose to come to Paparoa? My parents had lived in Paparoa before I was born. Visiting Paparoa on holiday, I met a handsome Irishman, Ron Skelton. Soon I returned to Paparoa as Mrs Ron Skelton!

What have you been doing here? We raised a family of three. When Carr's Drapery shop closed down, we bought the building with the aim of leasing it out to another business. When that didn't happen, on 3 July, 1967, Skelton's Drapery opened its doors for business. Ron was very active in local community affairs including Otamatea County Council and Dargaville and Northland Hospital Boards.

What are you doing now? After my husband died, our daughter Robyn returned to Paparoa to help me in the shop, and here we are still. We are quite a shopping destination for people from near and far who come and always find what they are looking for. I have always enjoyed knitting and being involved with Church and family. Lately I have been enjoying the Selwyn Centre every Thursday morning.



WHAT'S ON - SEPTEMBER 2015

SPECIAL EVENTS & MEETINGS

Arty Farties Inc Community Connexions: Leah's Outdoor Furniture workshop
Sat/Sun 12/13 Sept Pap Sports Pav 10-2pm ph Anne 431 6229, Sue 431 6117

The Gypsy Fair Paparoa Showgrounds 12-13 Sept, gates open 9am

Tango Fling with Swing ORT show Sat 19 Sept, 2pm Tickets \$20, gold card \$18 school student \$10. Door sales only. See more - page 4

Paparoa PTA Possum Purge 17-20 Sept. Family Fun Day Sun 20th see pg 11

The Kauri Museum exhibitions 'Wonders of Wool' 16 Jul-4 September; and 'Gilmore Brown Kaipara Art Awards 2015', 7 Aug-20 Sept

Defibrillator training Sunday 13 Sep, Sports pavil'n, 1.30pm All welcome to attend

REGULAR EVENTS, MEETINGS AND ORGANISATIONS

Anglican Church St Marks 1st, 2nd & 4th Sundays 10am, Hook Road, Paparoa

Ararua Church 10.30am every Sunday, All welcome ph 431 6622

Art Group Paparoa 1st Sun in month, Helen Budd's Studio, ph 431 6192

Art Studio, Ruawai Mon 10-12noon; Tue 7-9pm, ph Frances 439 2554

Arty Farties Summer Markets 9am-noon, opposite Village Green; Thur/Fri in the 'Tile Shed' ph Anne 431 6229; Crafty Kids Club alt Saturdays 10-2pm, Rm 5 Paparoa Primary School; Beginners Patchwork Group, Mon 7pm, Te Pahi River Dr.

Badminton Thursday :kids 5.30pm; older/experienced 7pm, Paparoa Hall

Crafternoons 1st & 3rd Wed in month, 1-4pm, Tinopai Hall ph Lyn 431 6090

Exercise to Music Tue 10.30am Paparoa Hall \$5 ph Rose 431 7418

Farmers' Market Sat 9-noon, Village Green; Sep 5, 19; every Sat Oct-Nov-Dec

Fire Force 1st & 3rd Monday in month 6.30pm Depot Rd ph Cohan 431 6668

Gardening Club 2nd Wed of month, ph Lea 431 6296

Grey Power Last Wed in month, 1pm, Anglican Church Hall, Mgtto

The Kauri Museum 'The Man from Matakoho' exhibition ongoing daily

Library Mon 1.30-4.30pm, Wed 10am-12noon, Thu 1.30-4.30pm, Fri 9.30am-1pm. Open Market days - alternate Saturdays 9.30-1pm

Line Dancing Thurs 10am-noon Paparoa Hall ph Rose 431 7418

Mainly Music Wed 9.30am Paparoa Comm Church, ph Rebecca 431 7550

Matakoho Music Makers 2nd Weds month 7pm BYO Sports Pav'n \$2pp 4316772

Otamatea Quilters 1st and 3rd Mon month 10am, Paparoa Hall 09 439 2262

Outdoor Bowls Maungaturoto Green ph Tony 431 6026 or Brian 431 6884

Paparoa Community Church 10.30am every Sunday, Hook Road

Paparoa Hall Functions venue ph Robyn 431 7306 or a/h Loraine 431 7290

Paparoa Lions Dinner Meetings 3rd Mon in month 6.30pm, Sports Pavilion

Paparoa Playcentre Tues & Fri 9.30-12.30 Visitors welcome ph Tina 021 033 5128

Paparoa Plunket Society Coffee Group 1st Tue/month, 10am Franklin Rd

Paparoa Primary School Term 3 finishes Sep 18, Term 4 commences 25 Oct

Paparoa Toy Library Wed 10.30-1pm, Paparoa Comm Church, Hilary 431 7330

Sacred Soul Circle 2nd Sundays, 10am-12 Marohemo hall ph Helen 021 938 024

Selwyn Centre Thurs 10am for over 65's, St Marks, Hook Rd, ph 431 8193

Sports Pavilion Functions venue, ph Vickie Owens 431 6432 for bookings

St Mary's Catholic Church 10am Wed, 6pm Sat, Maungaturoto

Table Tennis Tues 7.30pm, Sports Pavilion \$2 Pete 431 6822

Tennis starting soon, contact Sue Skelton 431 6224

Ukelele Players Beginners / experts, Thur 4pm Matakoho, ph Dennise 431 7012

Waka Ama Tues & Thur evenings 5pm, Sunday 10am, Pahi Domain

White Rock Gallery Open 7 days 10am-4pm, in Library building

Yoga - Chair Yoga Paparoa Sports Pavilion Mon & Thur 9.30-10.30am \$7

Yoga - Anamama Studio \$10/session ph Jenny 09 280 9694, 021 114 3370

PLEASE UPDATE US WITH YOUR DETAILS: press@paparoa.org.nz PP

HOOK, LINE & SINKER



There are some good snapper around.

On my latest trip out I caught five good ones all 2-3kg. I was not too far down the harbour, as I was just in the funnel before you get to Tinopai.

A few large sized kahawai are still there and last week there were some nice gurnard.

You just have to keep trying around to get a good spot.

Gravy

Paparoa Press CLASSIFIED ADVERTISING

Bee Swarms

If you see any bee swarms, phone Mike 431 6008 or 021 134 3747

Silage Bales

Large round silage bales wrapped for sale \$60+GST Graham 431 7209

"The first day of spring is one thing, and the first spring day is another."

The difference between them is sometimes as great as a month.

Henry Van Dykegarden

LOCAL TIDES for September 2015

SEPTEMBER TIDES - CALCULATED for PAHI-WHAKAPIRAU

DATE	LOW	HIGH	DATE	LOW	HIGH
1st	6.47pm	12.53pm	17th	7.14pm	1.21pm
2nd	7.34pm	1.40pm	18th	7.51pm	1.56pm
3rd	8.01am	2.27pm	19th	8.13am	2.34pm
4th	8.49am	3.17pm	20th	8.55am	3.19pm
5th	9.40am	4.11pm	21st	9.45am	4.13pm
6th	10.37am	5.13pm	22nd	10.45am	5.17pm
7th	11.43am	6.25pm	23rd	11.53am	6.31pm
8th	12.55pm	7.36pm	24th	1.05pm	7.33pm
9th	2.02pm	8.06am	25th	2.12pm	8.14am
10th	2.58pm	9.03am	26th	3.10pm	9.14am
11th	3.44pm	9.51am	27th	5.03pm	11.08am
12th	4.24pm	10.33am	28th	6.22pm	11.58am
13th	5.00pm	11.10am	29th	6.40pm	12.46pm
14th	5.34pm	11.44am	30th	7.27pm	1.32pm
15th	6.07pm	12.17pm			
16th	6.40pm	12.48pm			

Community Directory

EMERGENCY: FIRE ■ POLICE ■ AMBULANCE dial 111

COAST TO COAST HEALTH CARE

Maungaturoto Medical Centre: 8am-5pm Mon-Fri 09 431 8576
Paparoa Clinic: Doctor Tue + Fri 8.30am-12.30pm..... 09 431 7222
For urgent after hours medical service (Wellsford)..... 09 423 8086

DISTRICT NURSE Dargaville Hospital 09 439 3330
Healthline - 24 hour service..... 0800 611 116

HOSPICE KAIPARA Dargaville Hospital 09 439 3330

KAIPARA DISTRICT COUNCIL Helpline 0800 727 059
Mangawhai Office..... 0800 100 388

LINKING HANDS Health Shuttle Service, Maungaturoto 09 431 8969

LIONS CLUB PAPAROA Secretary Alistair Banks 09 431 6373

MAUNGATUROTO CHIROPRACTIC..... 09 431 8019

MAUNGATUROTO PHARMACY..... 09 431 8045

MAUNGATUROTO REST HOME 09 431 8696

OTAMATEA COMMUNITY SERVICES Community House 09 431 9080

PAPAROA LIBRARY Membership free-of-charge, Wheelchair access
Mon 1.30-4.30pm, Wed 10am-12noon, Thu 1.30-4.30pm, Fri 9.30am-1pm. Open Market days - alternate Saturdays 9.30-1pm

PAPAROA PLAYCENTRE Tina Ball.....021 033 5128

PAPAROA PLUNKET Cynthia Keay..... 09 431 8187
PLUNKET Helpline 0800 933 922

PAPAROA PRIMARY SCHOOL 09 431 7379

PARENT PORT Inc. free help for families Linda 09 425 9357

PHYSIOTHERAPY Lyndsay Bargh Mon/Wed/Fri from 8am...431 8576

PODIATRIST / FOOTCARE Jayne Short 020 4022 65998 / 09 431 7188

PUKE ARANGA TE KOHANGA REO 09 431 7089

YOUTH & WHANAU FOCUS South Kaipara, Rose 09 431 7418

White Rock Gallery



Six months on from opening in February this year Paparoa's White Rock gallery is going from strength to strength. We're open 7 days from 10am-4pm and presently have 42 members in total, 29 artists / crafters and 13 'friends of the gallery'. We're particularly thrilled that so many non-artists have wanted to get involved and these friends help us with rostered shifts and other tasks. Our Kaipara artists and crafters do the lot – they create the work, pay the bills, and staff the space. Just 25 members cover rostered shifts.

Sales figures are as good as we anticipated but we want to be able to do lots more – starting with an outside facelift, increased publicity and improved signage. A 'refresh' of exhibited work is carried out every 8 weeks so there's always something fresh to see, and this brings locals back again and again. Keep an eye on the word sign at



The Landing for date of next refresh.

There's lots on offer in the gifts line too, so remember us next time you're looking for that special something.



Local accommodation providers are pleased to offer the gallery as another "to do" option for their

guests while in the area, so this is a win-win for all concerned.



We welcome new members, so if you've ever thought you'd like to embark on things creative, or would like to be involved as a 'friend' do get in touch with Stu on 946 9990 or pop into the gallery and pick up a membership form.

The standard of work keeps rising and we receive good feedback from visitors and locals alike. Recent purchases of artworks were made by folks from as far away as Rotorua and the Catlins.



We're working on fundraising ideas, kicking off with a planned *Bring & Buy* before Christmas, and we're also planning *Orchids @ Market*, *Race Car Simulator*, and a *Christmas Fair* - watch this space for details.

We've received a funding grant for a series of workshops so look out for news of these too before year end.



A1 Cats

Boarding Cattery

Ken & Faye
Subritzky

548 Pahi Rd



Ph 09 431 7477
www.a1cats.co.nz

PAINTING

Building
Gib Stopping

- Alterations
 - Maintenance
 - Interior & Exterior
- anything considered

CAN WE FIX IT? YES WE CAN

PATRICK JOHANSON, FISHER ST, PAHI
021 154 5679 09 431 6020
patpats@farmside.co.nz

Kevin's Shed

panel beating & repairs

Just ask

027 642 4991
09 431 6444



3245 Paparoa-Dahleish Rd

WEBER BROS. LTD

Builders

For Quality Custom Built Homes
and all your building needs



Ph / Fax
Ralph 09 431-7087
Gary 09 431-7498